

## Bacterial Leaf Scorch of Shade Trees

*Nicole Gauthier, Plant Pathology Extension Specialist*

### IMPORTANCE

Bacterial leaf scorch is a chronic, eventually fatal disease that has devastated many shade trees in Kentucky landscapes and street plantings since the 1980s. Since then, an increasingly large number of urban plantings and historic trees have been destroyed as this disease continues to spread.

### HOSTS

The bacterial leaf scorch pathogen can infect over 100 plant species, and this list continues to grow as additional hosts and alternative hosts are identified. The most common shade tree hosts in the Commonwealth are various species of oak, maple, and sycamore. Other hosts identified in Kentucky include ash, boxelder, catalpa, dogwood, elm, ginkgo, hackberry, lilac, mulberry, sweetgum, and yellowwood (Table 1). In addition to these hosts, various small fruit (blackberry, blueberry, grape), herbaceous ornamentals, and weeds are known to be susceptible. Some common alternative hosts include bermudagrass, English ivy, goldenrod, Virginia creeper, and wild strawberry.

### SYMPTOMS

Infected trees may leaf-out normally in spring, but by late summer or autumn, affected leaves develop a marginal (Figure 1) or interveinal scorch (Figure 2). Depending on host, foliar scorch symptoms may appear brown, reddish-brown, or olive green (Figures 3A&B). In some hosts, a yellow or reddish-brown band may be present

along the interior edge of the scorched tissue (Figures 4A,B,C,D). Affected leaves may drop prematurely or remain attached to branches. Epicormic shoots (water sprouts) can develop at the tree base or along the trunk of severely diseased trees. Affected branches with scorch symptoms may initially be randomly distributed throughout the tree, or flagging may develop on one or a few branches. As more and more branches are affected, the disease takes its toll and causes twigs and branches to die back (Figure 5) until eventually the entire tree dies. Tree decline can

relatively quickly, especially under additional environmental stresses, such as drought. However, the disease typically progresses slowly over several years. Foliar symptoms alone are not definitive for this disease since leaf scorch can also occur



Figure 1. Red oak with scorch along the leaf margin.



Figure 2. Sycamore leaves with marginal scorch extending to interveinal leaf regions.

when trees are affected by abiotic factors (e.g. drought, transplant shock), as well as other diseases (e.g. vascular wilts, root decay). A positive diagnosis can only be determined with a laboratory analysis.

**TESTING FOR BACTERIAL LEAF SCORCH**

When bacterial leaf scorch is suspected, leaf tissue and petioles can be tested for the presence of the bacterium in a laboratory assay. Samples should be submitted to the UK Plant Disease Diagnostic Lab by going through a local Cooperative Extension Service office. The best time to collect samples is late summer or early autumn when the number of bacterial cells in the tissue is highest. Collect and submit at least 20 symptomatic leaves (with intact petioles) that show clear marginal scorch symptoms. In addition, it is advisable to submit branches so they can be examined for other

vascular wilt diseases, cankers, injuries, etc., in case the test for bacterial leaf scorch is negative or there are additional problems present. Samples should be submitted to an Extension office the same day they are collected.

**CAUSE & DISEASE DEVELOPMENT**

Bacterial leaf scorch is caused by the bacterium, *Xylella fastidiosa*. There are several strains or subspecies of this organism, which vary in host specificity and ability to cause disease.

*Xylella fastidiosa* is spread by certain sap-sucking insects in the Cicadellinae and Cercopidae families, such as leafhoppers, treehoppers, and spittlebugs.

These insects have piercing-sucking mouthparts that enable them to extract nutrients from a tree’s xylem (water conducting tissue). During feeding, the insect vector either acquires the bacterium to transmit to other susceptible hosts or deposits the bacterium it has already acquired. Because the bacterium can multiply within its esophagus, the insect can continue to transmit the pathogen until it molts or dies.

Once *X. fastidiosa* enters a tree, it may remain undetected for several years before symptoms are apparent. Bacteria in active infections multiply in the xylem and spread upward toward branch tips. Scorch is a typical symptom of water stress and, in this case, results from the build-up of bacterial cells and host defense compounds clogging xylem vessels and slowing water uptake to leaves. Timing of symptom development in mid- to late summer in urban trees is often associated with moisture and heat stresses occurring during the growing season, placing additional stress on the host. While spread from tree-to-tree does not appear to occur very rapidly, *X. fastidiosa* may also be present in many other hosts, such as shrubs, grasses, and weeds growing in landscapes. Thus, the insect vectors may not necessarily pass the disease from tree-to-tree, but may initially acquire the bacterium from these alternative hosts.

**DISEASE MANAGEMENT**

There is no cure for bacterial leaf scorch, and trees will continue to decline over a period of several years. However, following cultural

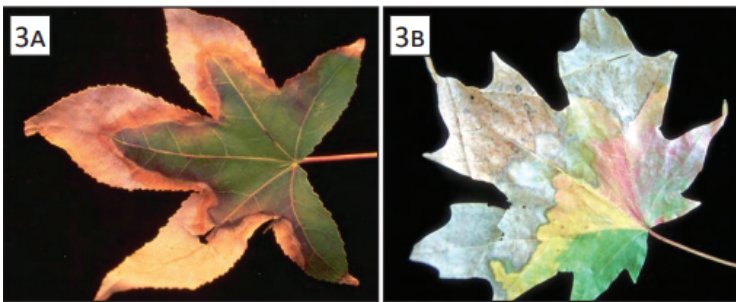


Figure 3. Foliar symptoms of bacterial scorch can vary greatly depending on the host. Sweetgum leaves (A) have a marginal scorch with reddish brown banding on the inner edge of the necrotic region while sugar maple (B) shows wide gray banding with a dark margin.

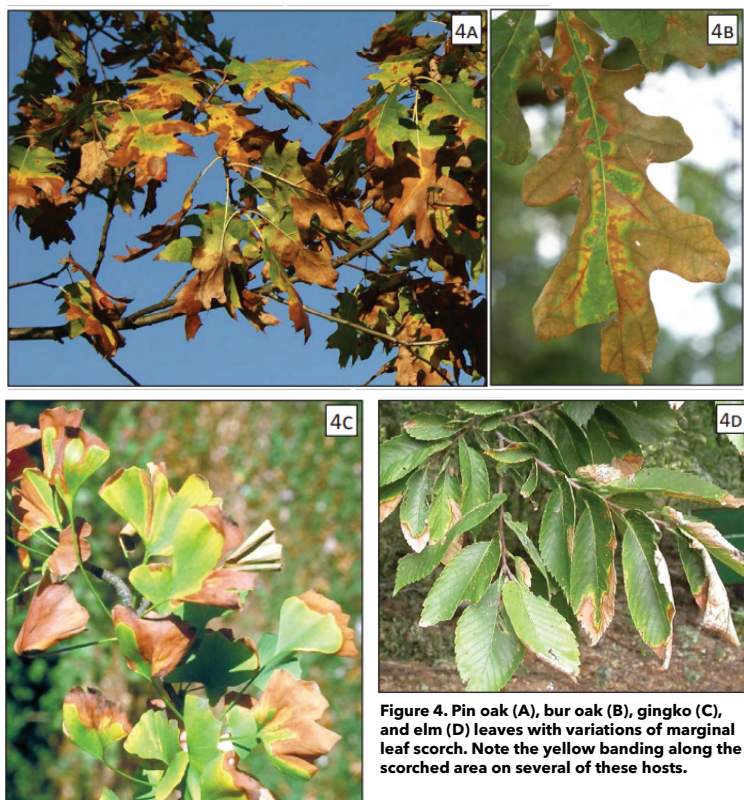


Figure 4. Pin oak (A), bur oak (B), ginkgo (C), and elm (D) leaves with variations of marginal leaf scorch. Note the yellow banding along the scorched area on several of these hosts.





Figure 5. Pin oak with advanced dieback symptoms.

practices that promote tree vigor may help slow the rate of decline.

### Cultural Practices to Promote Tree Vigor

#### Prune

Remove and destroy branches as they become infected and exhibit symptoms. It is unknown if this practice will slow disease progress, but it can help improve the tree's aesthetic value and results in the removal of hazardous limbs.

#### Irrigate

Apply supplemental water during hot, dry weather to relieve water stress, which can contribute to decline.

#### Apply mulch

Adding a layer of mulch to the entire root zone can help preserve soil moisture and reduce water stress.

#### Fertilize

Apply fertilizer and adjust soil pH according to soil test results to help promote tree health. Avoid overfertilization.

### Other Options

#### Tree replacement

Begin planting one or more non-susceptible replacement trees in the vicinity so that they will attain a reasonable size before the diseased tree must be removed. Choose native trees or those with a history of doing well in Kentucky landscapes.

#### Tree removal

As trees decline and become a safety hazard, complete tree removal will be necessary.

#### Tree injections

While there are commercial antibiotic tree-injection products available for managing bacterial leaf scorch, these treatments lack positive long-term research results. In addition,

Common Name	Scientific Name
Blackberry	<i>Rubus</i> sp.
Blueberry	<i>Vaccinium</i> sp.
Boxelder	<i>Acer negundo</i>
Buckeye	<i>Aesculus</i> sp.
Catalpa	<i>Catalpa speciosa</i>
Dogwood, flowering	<i>Cornus florida</i>
Dogwood, oriental	<i>Cornus kousa</i>
Elm, American	<i>Ulmus americana</i>
Elm, Dutch	<i>Ulmus x hollandica</i>
Elm, Siberian	<i>Ulmus pumila</i>
Elm, wych	<i>Ulmus glabra</i>
Ginkgo	<i>Gingko biloba</i>
Grape, cultivated & wild	<i>Vitis</i> sp.
Hackberry	<i>Celtis occidentalis</i>
Maple, red	<i>Acer rubrum</i>
Maple, silver	<i>Acer saccharinum</i>
Maple, sugar	<i>Acer saccharum</i>
Lilac	<i>Syringa vulgaris</i>
Linden	<i>Tilia</i> sp.
London plane	<i>Platanus x acerifolia</i>
Mulberry	<i>Morus alba</i>
Oak, black	<i>Quercus velutina</i>
Oak, bluejack	<i>Quercus incana</i>
Oak, bur	<i>Quercus macrocarpa</i>
Oak, chestnut	<i>Quercus prinus</i>
Oak, English	<i>Quercus robur</i>
Oak, laurel	<i>Quercus laurifolia</i>
Oak, live	<i>Quercus virginiana</i>
Oak, northern red	<i>Quercus rubra</i>
Oak, pin	<i>Quercus palustris</i>
Oak, post	<i>Quercus stellat</i>
Oak, scarlet	<i>Quercus coccinea</i>
Oak, shingle	<i>Quercus imbricaria</i>
Oak, Shumard	<i>Quercus shumardii</i>
Oak, southern red	<i>Quercus falcate</i>
Oak, swamp chestnut	<i>Quercus michauxii</i>
Oak, swamp white	<i>Quercus bicolor</i>
Oak, turkey	<i>Quercus laevis</i>
Oak, water	<i>Quercus nigra</i>
Oak, white	<i>Quercus alba</i>
Oak, willow	<i>Quercus phellos</i> .
Sweetgum	<i>Liquidambar styraciflua</i>
Sycamore	<i>Platanus occidentalis</i>
Yellowwood	<i>Cladrastis kentukea</i>

Table 1. Partial listing of woody plant hosts susceptible to *Xylella fastidiosa*

the repeated injections necessary to slow disease progress provide ports of entry for decay organisms, which infect trees and cause additional damage. Use of tree injections is not recommended because they are not long-lasting, are expensive, and inherently damage trees.

#### Insecticides

Attempts to manage the insect vectors using insecticides have proven ineffective in preventing the spread of the bacterial leaf scorch pathogen.

# What's Up Next?

**October 18th** - 10:00am *Animal Adaptations*

**October 18th** - 5:30pm *4-H Nature Club*

**November 2nd** - 10:00am *Winter Birding*

**November 10th** - 2:00pm *Winter Birding*

**November 15th** - 2:00pm *Winter Birding*

**December 7th** - 6:00pm *Night Hike*

**EVERY TUESDAY** 3-4pm & **FRIDAY** 9-10am *1000 Hours Outside*

## NEW FOR 2023!

**Would you like to receive our Horticulture Newsletter? Scan the QR code or call (859) 572-2600 to be added to the distribution list**



**Find us on facebook**

**@ Campbell County  
Environmental  
Education Center**

*Follow us on Instagram*



**@ campbellcountyeec**



# Animal Adaptations

Come enjoy an indoor program on the animals of Campbell County and the unique traits that help them survive in the wilderness!

**Campbell County  
Environmental  
Education Center**

**1261 Race Track  
Road  
Alexandria, KY 41001**

**October 5, 2023 @ 2:00pm ~ October 18, 2023 @ 10:00am**



**Registration is required. Please call (859) 694-1666 / (859) 572-2600  
or register online at <http://campbell.ca.uky.edu/>**

## **Cooperative Extension Service**

Agriculture and Natural Resources  
Family and Consumer Sciences  
4-H Youth Development  
Community and Economic Development

## **MARTIN-GATTON COLLEGE OF AGRICULTURE, FOOD AND ENVIRONMENT**

Educational programs of Kentucky Cooperative Extension serve all people regardless of economic or social status and will not discriminate on the basis of race, color, ethnic origin, national origin, creed, religion, political belief, sex, sexual orientation, gender identity, gender expression, pregnancy, marital status, genetic information, age, veteran status, physical or mental disability or reprisal or retaliation for prior civil rights activity. Reasonable accommodation of disability may be available with prior notice. Program information may be made available in languages other than English. University of Kentucky, Kentucky State University, U.S. Department of Agriculture, and Kentucky Counties, Cooperating. Lexington, KY 40506



Disabilities  
accommodated  
with prior notification.





**Martin-Gatton**  
College of Agriculture,  
Food and Environment

# Winter Birding

**Campbell County  
Environmental  
Education Center**  
1261 Race Track Road  
Alexandria, KY 41001

11/2 ~ 10:00am  
11/10 ~ 2:00pm  
11/15 ~ 2:00pm

Join us for a lesson on bird I.D. and a hike around  
the interpretive trail to see and hear birds!  
Participants are encouraged to bring their own  
binoculars if possible.

Registration is required. Please call (859) 694-1666 / (859) 572-2600  
or register online at <http://campbell.ca.uky.edu/>

## Cooperative Extension Service

Agriculture and Natural Resources  
Family and Consumer Sciences  
4-H Youth Development  
Community and Economic Development

## MARTIN-GATTON COLLEGE OF AGRICULTURE, FOOD AND ENVIRONMENT

Educational programs of Kentucky Cooperative Extension serve all people regardless of economic or social status and will not discriminate on the basis of race, color, ethnic origin, national origin, creed, religion, political belief, sex, sexual orientation, gender identity, gender expression, pregnancy, marital status, genetic information, age, veteran status, physical or mental disability or reprisal or retaliation for prior civil rights activity. Reasonable accommodation of disability may be available with prior notice. Program information may be made available in languages other than English. University of Kentucky, Kentucky State University, U.S. Department of Agriculture, and Kentucky Counties. Cooperating. Lexington, KY 40506



Disabilities  
accommodated  
with prior notification.



# NIGHT HIKE

**DEC. 7TH, 6:00PM**



**CAMPBELL COUNTY  
ENVIRONMENTAL  
EDUCATION CENTER**

**1261 RACE TRACK RD.  
ALEXANDRIA, KY  
41001**

**Registration is required. Please call (859) 694-1666 / (859) 572-2600  
or visit <http://campbell.ca.uky.edu/> to register**

## Cooperative Extension Service

Agriculture and Natural Resources  
Family and Consumer Sciences  
4-H Youth Development  
Community and Economic Development

## MARTIN-GATTON COLLEGE OF AGRICULTURE, FOOD AND ENVIRONMENT

Educational programs of Kentucky Cooperative Extension serve all people regardless of economic or social status and will not discriminate on the basis of race, color, ethnic origin, national origin, creed, religion, political belief, sex, sexual orientation, gender identity, gender expression, pregnancy, marital status, genetic information, age, veteran status, physical or mental disability or reprisal or retaliation for prior civil rights activity. Reasonable accommodation of disability may be available with prior notice. Program information may be made available in languages other than English. University of Kentucky, Kentucky State University, U.S. Department of Agriculture, and Kentucky Counties, Cooperating.

Lexington, KY 40506



Disabilities  
accommodated  
with prior notification.



# 1000 HOURS OUTSIDE

@ THE CAMPBELL COUNTY ENVIRONMENTAL EDUCATION CENTER

Get in your 1000 hours outside this year  
with a guided walk along the nature trails!

EVERY TUESDAY 3-4PM & FRIDAY 9-10AM  
JANUARY - DECEMBER 2023



**\*Some dates may be cancelled due to school field trips or inclement weather throughout the year\***

 **Martin-Gatton**  
College of Agriculture,  
Food and Environment

**PLEASE CALL (859) 694-1666 / (859) 572-2600 OR REGISTER  
ONLINE AT [HTTPS://CAMPBELL.CA.UKY.EDU/](https://campbell.ca.uky.edu/)**

## Cooperative Extension Service

Agriculture and Natural Resources  
Family and Consumer Sciences  
4-H Youth Development  
Community and Economic Development

## MARTIN-GATTON COLLEGE OF AGRICULTURE, FOOD AND ENVIRONMENT

Educational programs of Kentucky Cooperative Extension serve all people regardless of economic or social status and will not discriminate on the basis of race, color, ethnic origin, national origin, creed, religion, political belief, sex, sexual orientation, gender identity, gender expression, pregnancy, marital status, genetic information, age, veteran status, physical or mental disability or reprisal or retaliation for prior civil rights activity. Reasonable accommodation of disability may be available with prior notice. Program information may be made available in languages other than English. University of Kentucky, Kentucky State University, U.S. Department of Agriculture, and Kentucky Counties, Cooperating. Lexington, KY 40506



Disabilities  
accommodated  
with prior notification.



CAMPBELL COUNTY  
**FARMERS  
MARKET**

**2023**

**Highland Heights\*— Tuesdays**

Senior Citizens Activity Center

3504 Alexandria Pike

**May 16 thru October 24**

3:00 p.m. to 6:00 p.m.

**Fort Thomas\*\*— Wednesdays**

Mess Hall in Tower Park

801 Cochran Avenue

**April 12 thru December 13** (no market on 11/22/2023)

3:00 p.m. to 6:00 p.m.

*Hours extend to 7:00 p.m. June-September  
(Senior shopping begins at 2:45 p.m.)*

**Alexandria\*— Fridays**

Southern Lanes Sports Center

7634 Alexandria Pike

**May 19 thru October 27**

3:00 p.m. to 6:00 p.m.

**Newport\*— Saturdays**

Next to Pepper Pod Restaurant

709 Monmouth Street

**May 20 thru October 28**

9:00 a.m. to 12 noon

\* Accepts WIC, SNAP and Senior Farmer's  
Market Nutrition Program

\*\* Accepts SNAP only  
Supplemental Nutrition Assistance Program

Large variety of  
home grown produce,  
breads, honey and other  
KY Proud commodities.  
For more information,  
call 859-572-2600.







# Nature Club

## 2023-2024 Meeting



Martin-Gatton  
College of Agriculture,  
Food and Environment

 4-H Youth Development



 Sept. 20

 Dec. 20

 Mar. 20

 Oct. 18

 Jan. 17

 Apr. 17

 Nov. 15

 Feb. 21

### 5:30pm-6:30pm

Ages 5-15, come learn about nature and explore the outdoors with 4-H at the **Campbell County Environmental Center:**  
**1261 Race Track Road**  
**Alexandria, KY 41001**

**Each participant must register each month.**

Register online at [campbell.ca.uky.edu](http://campbell.ca.uky.edu)

or by phone: (859) 572-2600.

Contact Ginny Butsch with any questions:

### Cooperative Extension Service

Agriculture and Natural Resources  
Family and Consumer Sciences  
4-H Youth Development  
Community and Economic Development

### MARTIN-GATTON COLLEGE OF AGRICULTURE, FOOD AND ENVIRONMENT

Educational programs of Kentucky Cooperative Extension serve all people regardless of economic or social status and will not discriminate on the basis of race, color, ethnic origin, national origin, creed, religion, political belief, sex, sexual orientation, gender identity, gender expression, pregnancy, marital status, genetic information, age, veteran status, physical or mental disability or reprisal or retaliation for prior civil rights activity. Reasonable accommodation of disability may be available with prior notice. Program information may be made available in languages other than English. University of Kentucky, Kentucky State University, U.S. Department of Agriculture, and Kentucky Counties, Cooperating. Lexington, KY 40506



Disabilities  
accommodated  
with prior notification.